



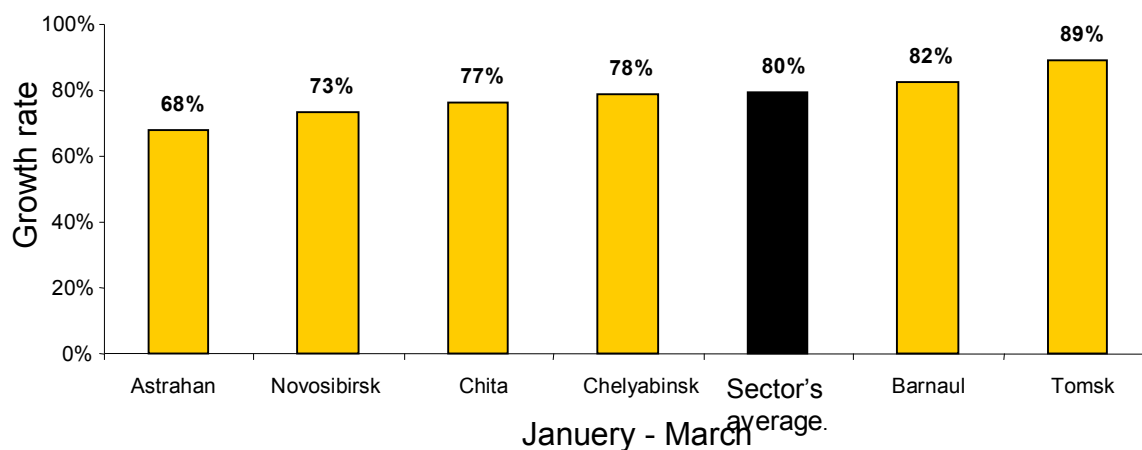
The Novoport company's financial and production activities (1 Quarter 2009)



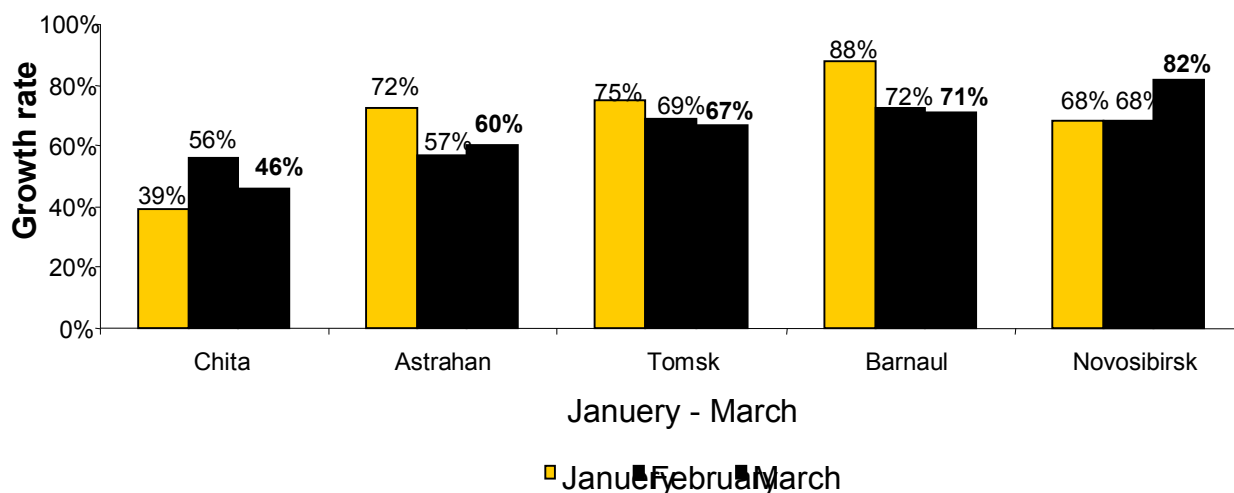
Production performance (1 Quarter 2009)

Name	Sum total		Average	Novosibirsk	Chelyabinsk	Tomsk	Barnaul	Chita	Astrahan
	Actual	2009/2008							
Departures	4887	81%	-	81%	78%	88%	105%	70%	65%
Total take-off mass	301	72%	-	71%	76%	87%	88%	77%	48%
Passanger traffic	564	76%	80%	73%	78%	89%	82%	77%	68%
Cargo and post	4378	71%	67%	74%	-	70%	75%	47%	62%
Maintenance	41538	90%	-	81%	81%	-	-	-	195%
Fuel implementation	17953	62%	-	62%	-	-	71%	-	53%
Average hotel fillability	16%	40%	-	-	51%	70%	69%	25%	14%

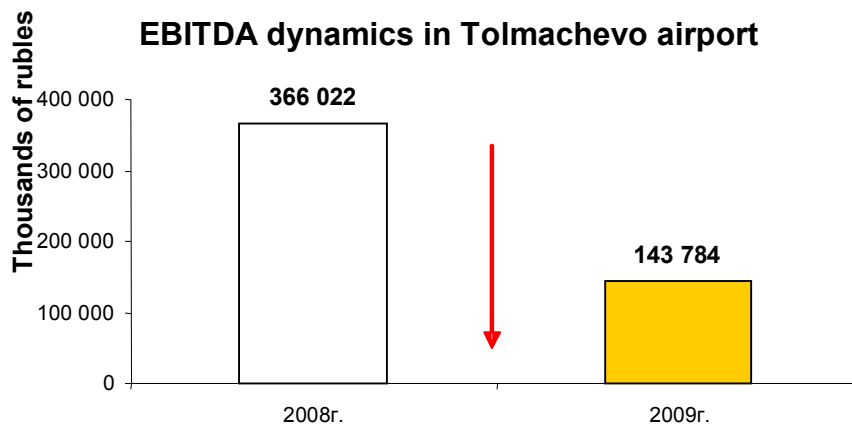
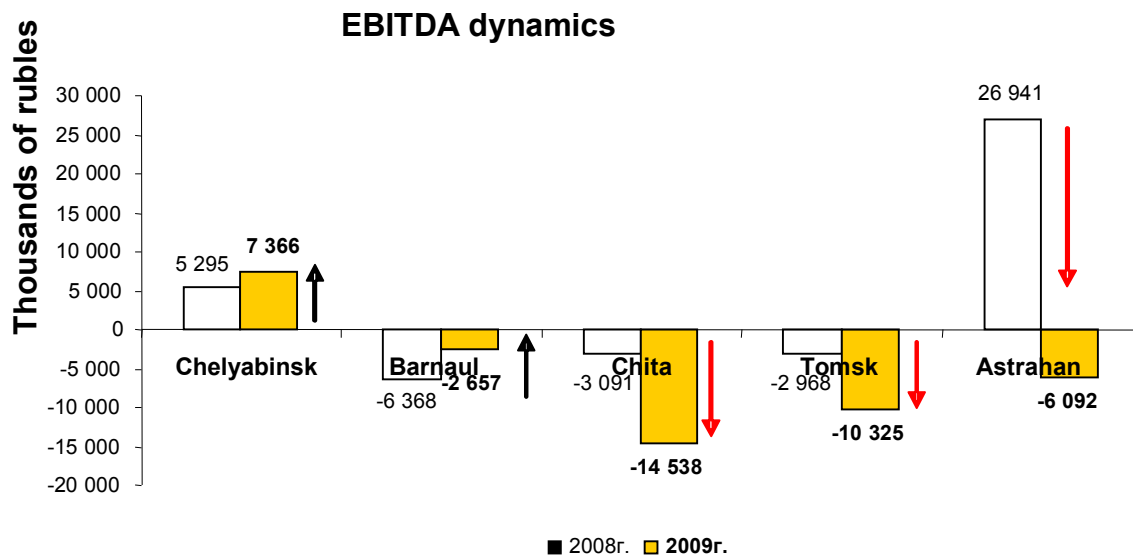
The growth rates comparative analysis



Comparative analysis of cargo traffic's growth rates



Financial performance (1 Quarter 2009)								
Name	Sum total		Novosibirsk	Chelyabinsk	Barnaul	Chita	Tomsk	Astrahan
Gain	878126	73%	545592	86841	101978	20257	45589	63738
EBITDA	138802	34%	143784	7366	-2657	-14538	-10325	-6092
Net profit	-101075	-	-62397	223	3137	-12565	-8963	17459
Corporate dept	2428652	106%	1318478	139157	95252	40030	88167	59270



1. The passenger traffic decrease occurred in all directions. The main part falls on Moscow.
2. “Moskoviya’s” leaving led to passenger’s traffic decrease in Barnaul airport. “UTair” had come which led to everyday flights to Moscow and Surgut.
3. “Dauria’s”, “KraAir’s” and “VimAvia’s” leaving led to passenger’s traffic decrease in Chita airport. Hotel fillability reduced because it’s main guests were crews.
4. “Krasair” and “Alrosa” left Tomsk airport. “Transaero” had come.